



## WARNING: PAINTBALL GUNS AND PAINTBALL GUN ACCESSORIES ARE NOT TOYS!

- Careless use or misuse may result in serious bodily injury or death!
- Eye protection designed for paintball must be worn by the user and all persons within range.
- Must be 18 years of age or older to operate or handle any paintball gun and paintball gun accessories without adult or parental supervision.
- Read and understand all cautions, warnings, and operating manuals before using any paintball gun or paintball gun accessory.
- Do not aim paintball gun at eyes or head of people or at animals.
- Paintball guns are to be used with paintballs only.
- Use common sense and have fun.

Any tampering with the unit voids your warranty. Please consult with a First Strike® service center before performing any maintenance. The use of non factory authorized components within this product may cause a fire or shock hazard.

**IN NO EVENT SHALL SELLER BE LIABLE FOR ANY DIRECT, INCIDENTAL OR CONSEQUENTIAL DAMAGES OF ANY NATURE, OR LOSSES OR EXPENSES RESULTING FROM ANY DEFECTIVE PRODUCT OR THE USE OF ANY PRODUCT.**

**WARNING:** This product can expose you to chemicals including arsenic, which is known to the State of California to cause cancer. For more information, go to [www.P65Warnings.ca.gov](http://www.P65Warnings.ca.gov).

You must be at least 18 years of age to purchase this product. This product may be mistaken for a firearm by law enforcement officers or others. Altering the color of the product or brandishing the product in public may be dangerous and may be considered a crime.

© 2020 United Tactical Systems. All rights reserved. This United Tactical Systems product is protected by United States and International Patents. United Tactical Systems Trademarks, Designs and Copyrights are protected by United States and International Law. For more information contact United Tactical Systems at [marketing@first-strike.com](mailto:marketing@first-strike.com).



**FIRST STRIKE®**

# ROSCOE

## QUICK START GUIDE

Thank you for purchasing the First Strike® Roscoe. Like all paintball markers, please remove all air sources prior to servicing. If you have any questions regarding this product or other First Strike® Paintball products, please reach out by calling, emailing or visiting our website.

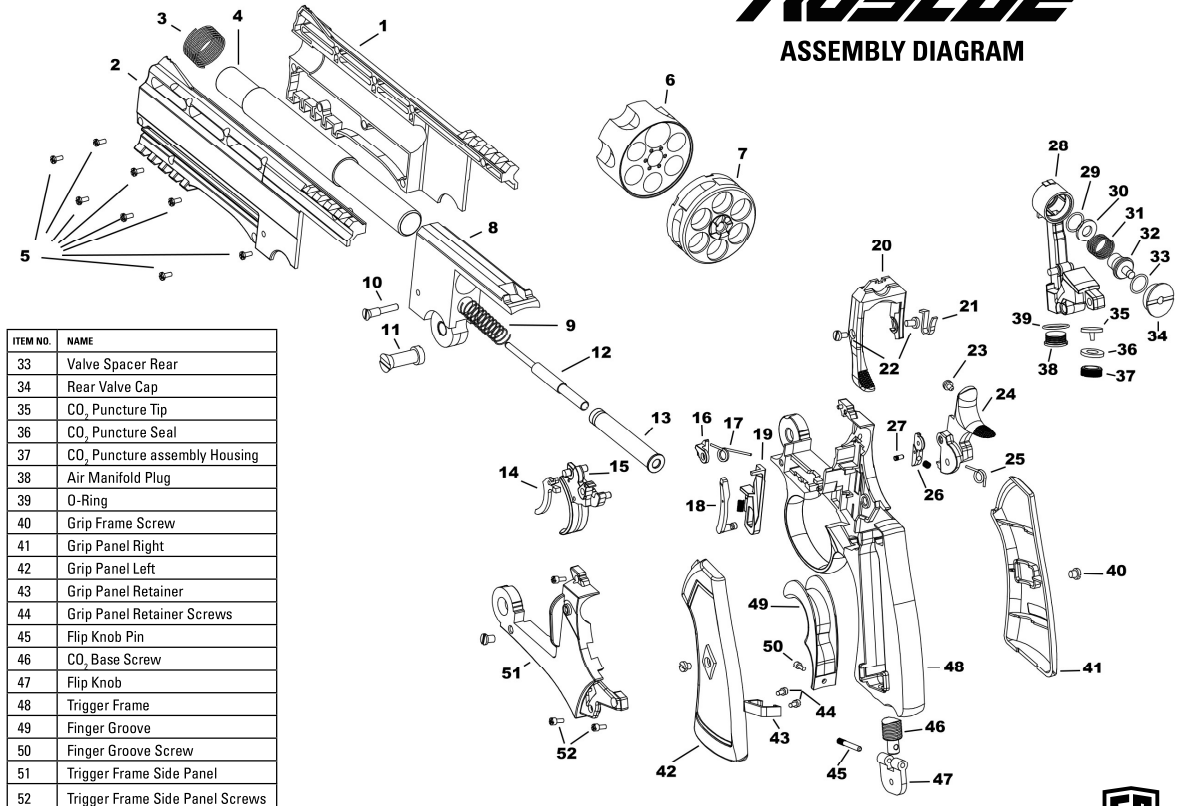
### FIRST STRIKE®

**Headquarters:**  
28101 Ballard Dr. Ste. F  
Lake Forest, IL 60045

→ 1-260-478-2500  
→ [service@first-strike.com](mailto:service@first-strike.com)  
→ [FIRST-STRIKE.COM](http://FIRST-STRIKE.COM)

**NOTE:** For best performance, use First Strike® approved oil and First Strike® Rounds or Ultra Spherical Projectiles. Keep lubricated and **NEVER** store pressurized.

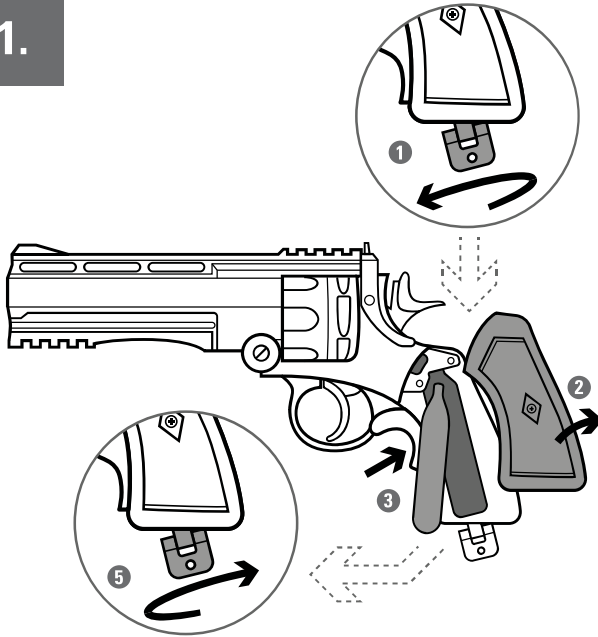
ITEM NO.	NAME
1	Body Panel Right
2	Body Panel Left
3	Barrel Spring
4	Barrel
5	Body Panel Screws
6	Cylinder Mount
7	Cylinder
8	Cylinder Block
9	Cylinder Guide Rod Spring
10	Cylinder Guide Retention Screw
11	Hinge Screw
12	Cylinder Guide Rod
13	Cylinder Guide Rod Housing
14	Safety
15	Trigger Assembly
16	Cylinder Detent
17	Cylinder Detent Spring
18	Lifter
19	Trigger Linkage
20	Cylinder Release
21	Cylinder Release Spring
22	Cylinder Release Screws
23	Striker
24	Hammer
25	Hammer Spring
26	Lifter Actuator
27	Lifter Actuator Pin
28	Air Manifold
29	O-Ring
30	Valve Spacer Front
31	Valve spring
32	Cup Seal



ITEM NO.	NAME
33	Valve Spacer Rear
34	Rear Valve Cap
35	CO <sub>2</sub> Puncture Tip
36	CO <sub>2</sub> Puncture Seal
37	CO <sub>2</sub> Puncture assembly Housing
38	Air Manifold Plug
39	O-Ring
40	Grip Frame Screw
41	Grip Panel Right
42	Grip Panel Left
43	Grip Panel Retainer
44	Grip Panel Retainer Screws
45	Flip Knob Pin
46	CO <sub>2</sub> Base Screw
47	Flip Knob
48	Trigger Frame
49	Finger Groove
50	Finger Groove Screw
51	Trigger Frame Side Panel
52	Trigger Frame Side Panel Screws



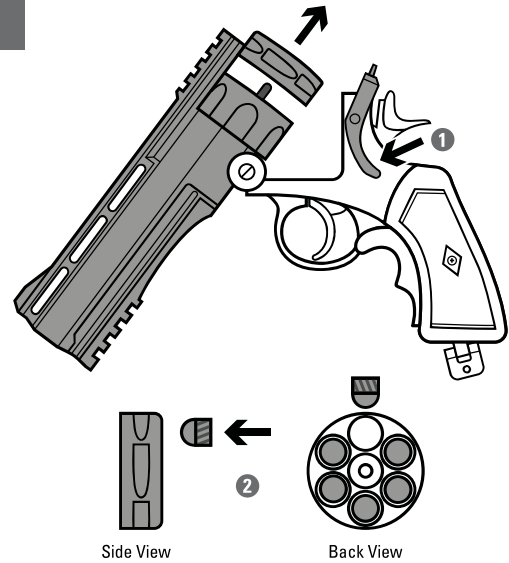
1.



### INSTALL 12g CARTRIDGE (NOT INCLUDED)

1. Unscrew cartridge screw counter-clockwise 3 turns.
2. Pop left grip cover off
3. Insert 12g cartridge
4. Install grip
5. Screw cartridge screw clockwise until CO<sub>2</sub> engages (you will hear it hiss), continue to screw in quickly until pressurized and no leaks are heard.

2.

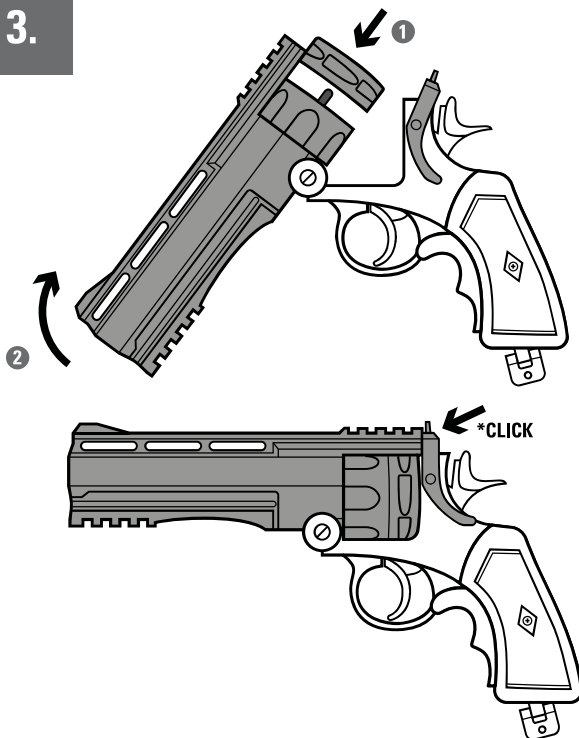


### LOAD CYLINDER WITH PROJECTILES

1. Remove cylinder from Roscoe — pop Roscoe in half by pushing cylinder Release Lever.
2. Install projectiles into each hole of the cylinder, six total.
3. Some gelatin projectiles might be too small; refrain from using those projectiles for best performance.

**NOTE:** Install cylinder with silver teeth to the back of the marker.

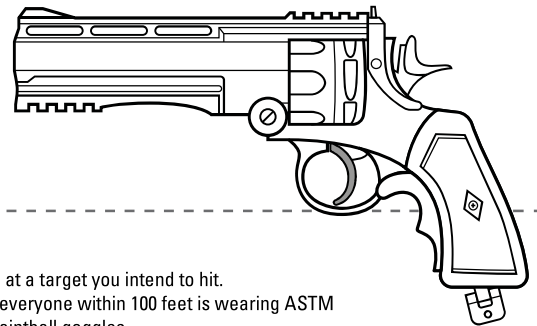
3.



### INSTALL CYLINDER INTO ROSCOE

1. Install cylinder
2. Pull barrel back and engage it with cylinder release lever for positive lock.

4.



### SHOOT

1. Always aim at a target you intend to hit.
2. Make sure everyone within 100 feet is wearing ASTM approved paintball goggles
3. Never aim or shoot at animals.
4. Misuse can cause serious injury and even death.

### TROUBLESHOOTING

**Q: My cylinder doesn't rotate when I pull the trigger.**

**A:** Try removing the cylinder and reinstalling. Make sure the cylinder teeth are lined up so it engages with the cylinder cycler.

**Q: It leaks when I engage my 12g.**

**A:** Remove 12g and place 3 drops of First Strike® approved oil to the top of the 12g and try again.

**A2:** Replace part 33 and 26. (see assembly diagram)

**Q: I am shooting gelatin paint and I can't get a ball to leave the barrel.**

**A:** Make sure the .50cal projectiles are at least .488 in size, otherwise use First Strike® Rounds or Ultra Spherical Projectiles for best performance.

**Q: I'm having issues I can't solve, and the manual does not cover it.**

**A:** contact our service team @ [service@first-strike.com](mailto:service@first-strike.com), or call us at 260-478-2500 ext 251.